

VERO HOMES

**Year-round mobile homes | Live wherever you wish**



## About us

---

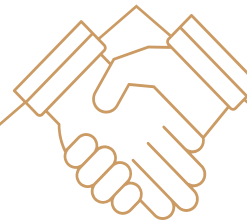
The **Vero Homes** brand was created out of love for nature, modern architecture and beautiful interiors.



Since 2018, we have been creating year-round mobile homes that allow **living anywhere in the world**, offering security and comfort at an attractive price.



We focus on **high quality and functionality**, and our focus on aesthetics of workmanship and on the smallest details makes mobile houses by Vero Homes not only durable, but also enchanting with their interiors.



We respond to the needs of even the most demanding investors, and our extensive experience makes **the implementation process fast**, fun and rewarding for both parties.



We are **a Polish manufacturer**. Our main office is located in Silesia, in Lubliniec, whereas the factory is located in nearby Lisów. From here, we transport houses to investors from all over Europe.

# Premium mobile homes

---

Vero Homes mobile houses allow living wherever you wish - close to nature as well as in the middle of a metropolis.

**They are distinguished by their excellent insulation, robust workmanship, high standard of equipment, and modern design.** We put great emphasis on ensuring that the components of the house are consistent with each other creating a cosy atmosphere.

The houses are built from start to finish in our factory and arrive ready for our clients to live in. Our team deals with them in a comprehensive manner - from getting to know the investor's expectations and preparing the design, through production, up to transport and setting up the house. At each stage, we provide advice and information regarding the investment.





## What makes Vero Homes houses **unique**?

year-round

complete design customisation

turnkey house in 4-8 weeks

the best certified materials

ecological solutions

no thermal bridges or moisture

the highest standard of equipment

complete furnishing of each interior

functionality

modern design

aesthetics of workmanship



# Technology

Vero Homes mobile houses are built using **timber-frame technology, with the highest quality profiles**. They include two axles and wheels allowing for manoeuvring the house around the plot.

We take advantage of the best certified building and finishing materials, guaranteeing the durability of the house and its resistance to the elements. In addition, we aim to make our houses as **energy-efficient and environmentally friendly** as possible.

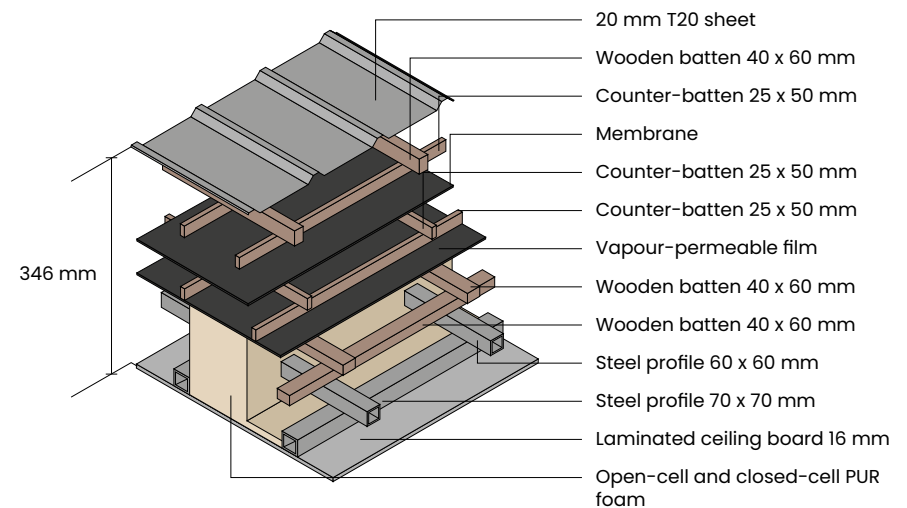
The houses created by Vero Homes can be used **for year-round living**. Thanks to the excellent thermal insulation of the house, using a thick layer of PUR foam, applying triple-glazed windows, heating mats and films, our houses are warm in cold weather and pleasant during the hot summer season.

On request, we can install recuperation, a heat pump, and photovoltaic panels in the house, and are also able to adjust the thickness of the walls as well as other parameters to achieve an energy self-sufficient house.

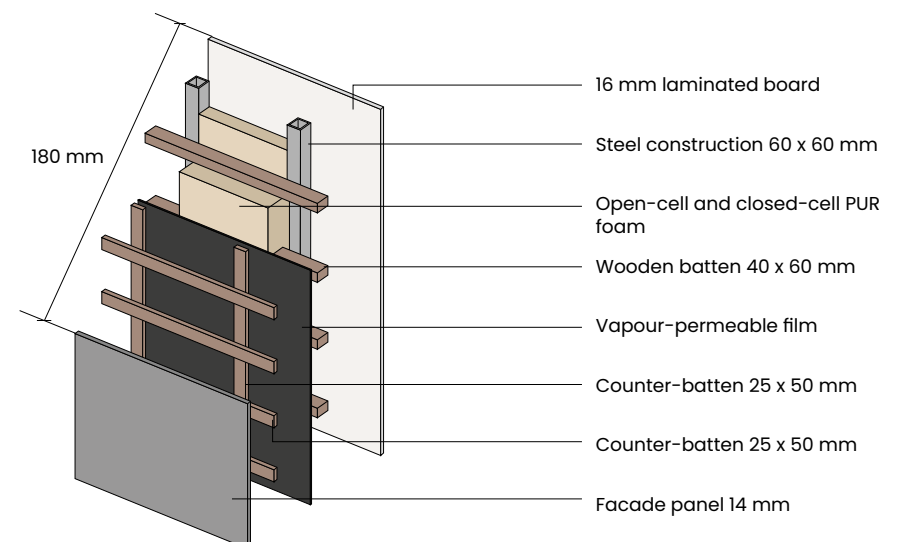
## Thermal insulation: PUR foam:

roof: 20 cm, walls: 15 cm, floor: 30-45 cm

Roof section



Wall section



# House sizes and customisation

We rely on six basic sizes:

<b>36 m<sup>2</sup></b> external dimension: <b>9 m x 4 m</b>	<b>40 m<sup>2</sup></b> external dimension: <b>10 m x 4 m</b>
<b>44 m<sup>2</sup></b> external dimension: <b>11 m x 4 m</b>	<b>48 m<sup>2</sup></b> external dimension: <b>12 m x 4 m</b>
<b>56 m<sup>2</sup></b> external dimension: <b>14 m x 4 m</b>	<b>63 m<sup>2</sup></b> external dimension: <b>14 m x 4,5 m</b>

The height of the rooms depends on the roof type:

- ◆ **single-pitch roof:** 2,25 m (walls) – 2,45 m (gable)
- ◆ **pitch-roof:** 2,44 m (walls) – 2,97 m (gable)
- ◆ **concealed roof:** 2,45–2,60 m







We allow **complete customisation of the house.**

The buyer makes a decision on the layout of the rooms, the windows, doors, type of elevation, heating, finishing elements and furnishings.

As a result of the modifying possibilities of the modules, the mobile home **can serve not only residential but also commercial purposes.** We are experienced in designing facilities for businesses, as well as modules for the elderly, disabled, and individuals with exceptional needs.

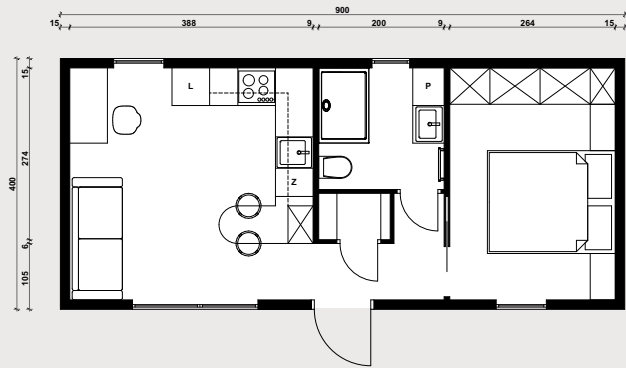
**We process orders from all over Europe.** We adapt our houses to the regulations of a given country, the building conditions and the climatic conditions of the location.

To make it easier for our clients to choose materials, **we provide samples** (examples of facades, furniture fronts, worktops, floors, etc.) and are open to investor suggestions. **This collaboration results in mobile homes that stand out on the global market.**

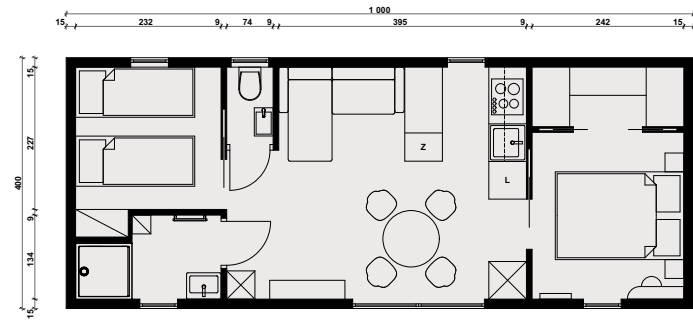


# Sample interior layouts

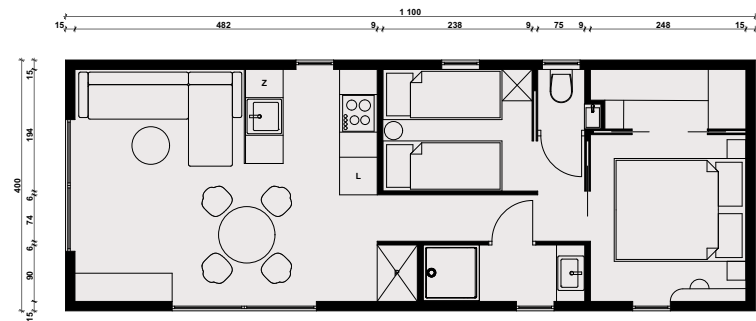
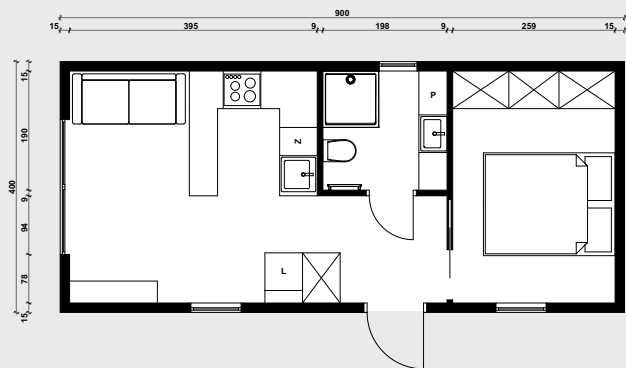
**36 m<sup>2</sup>**



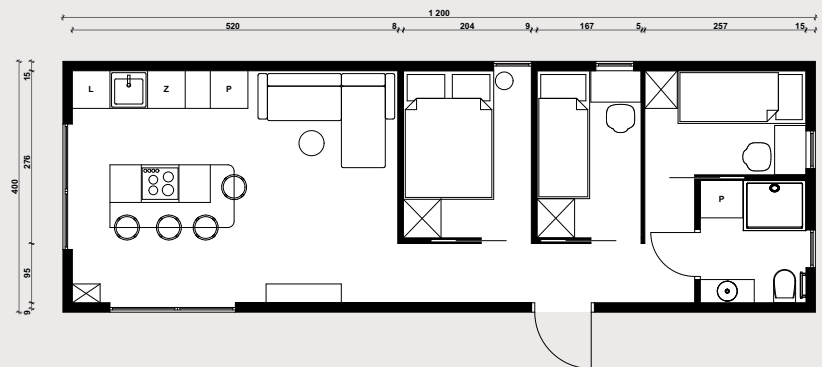
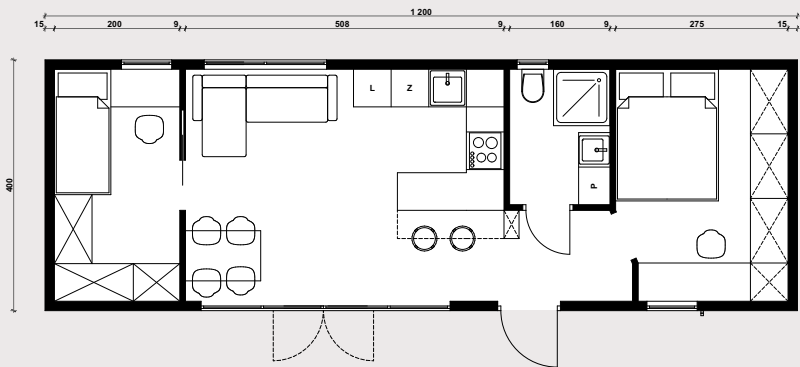
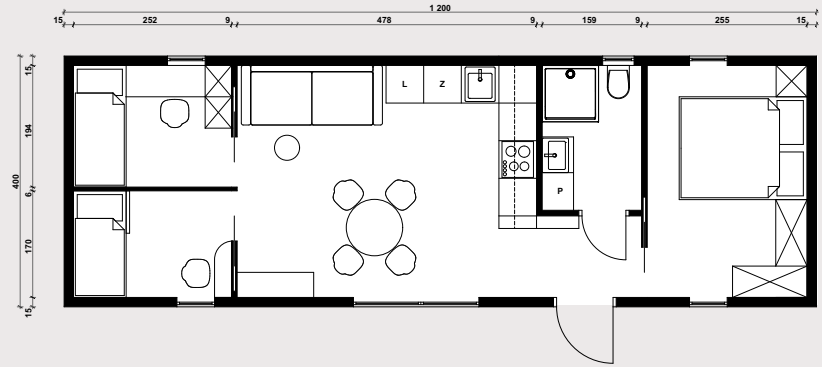
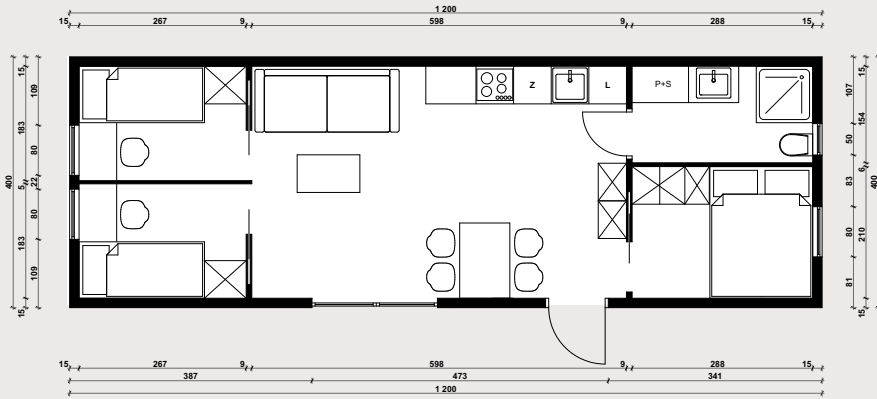
**40 m<sup>2</sup>**



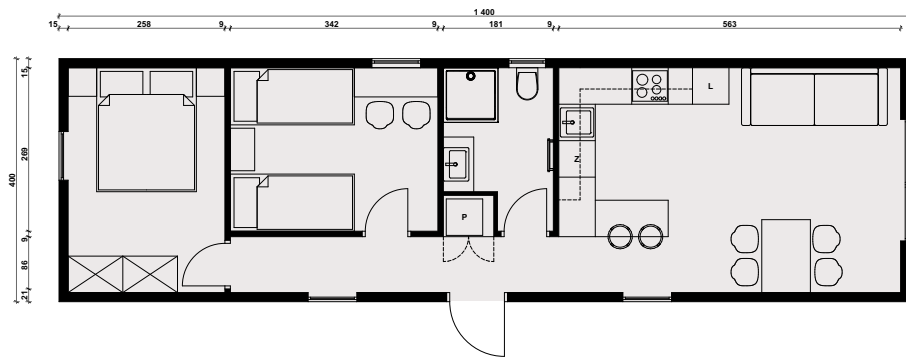
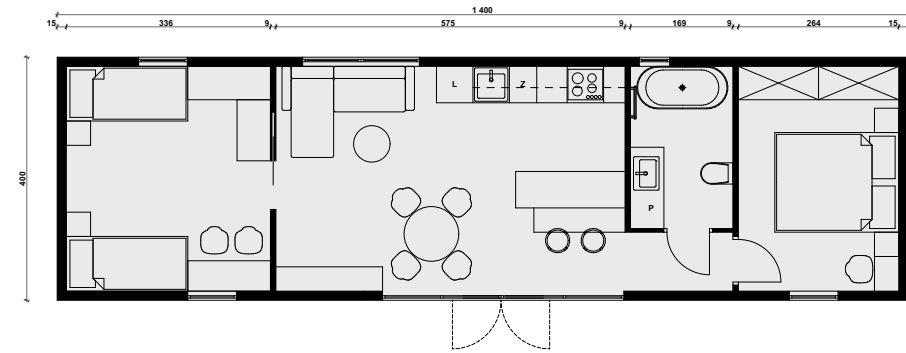
**44 m<sup>2</sup>**



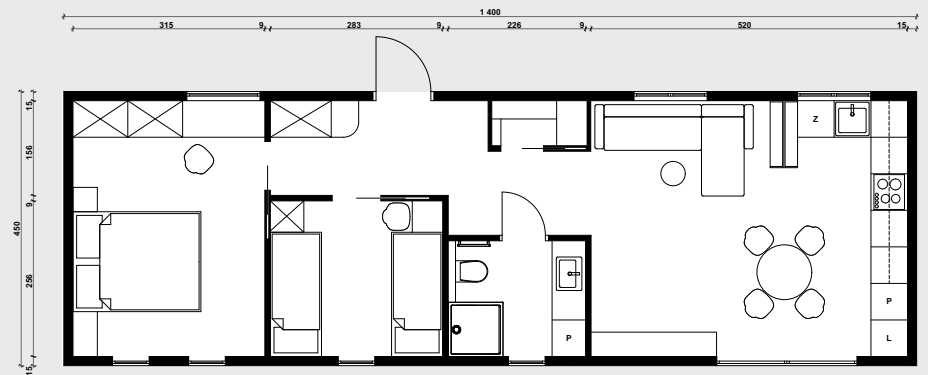
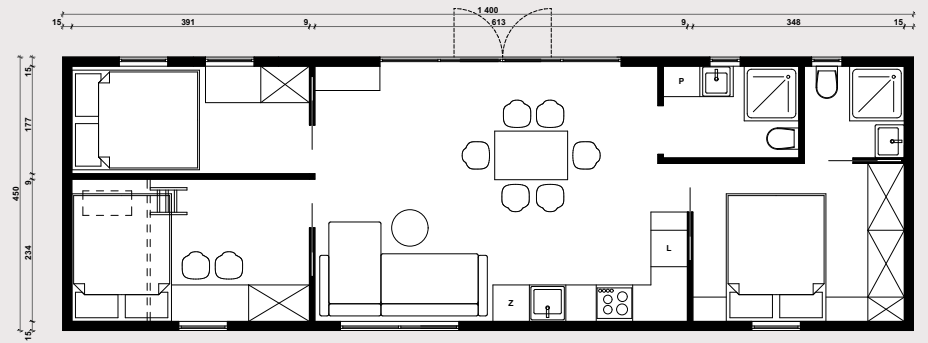
# 48 m<sup>2</sup>

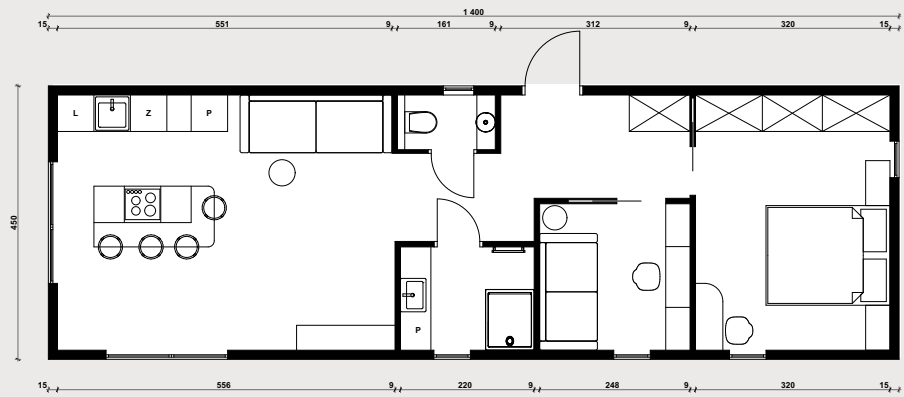


56 m<sup>2</sup>



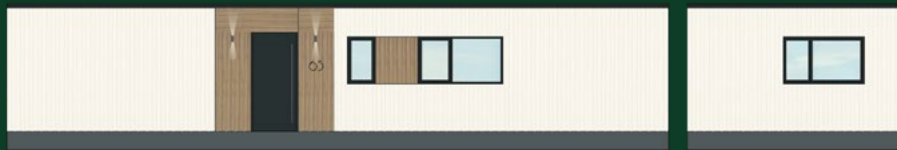
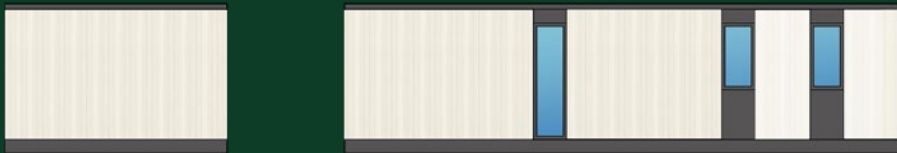
63 m<sup>2</sup>





# Sample facades

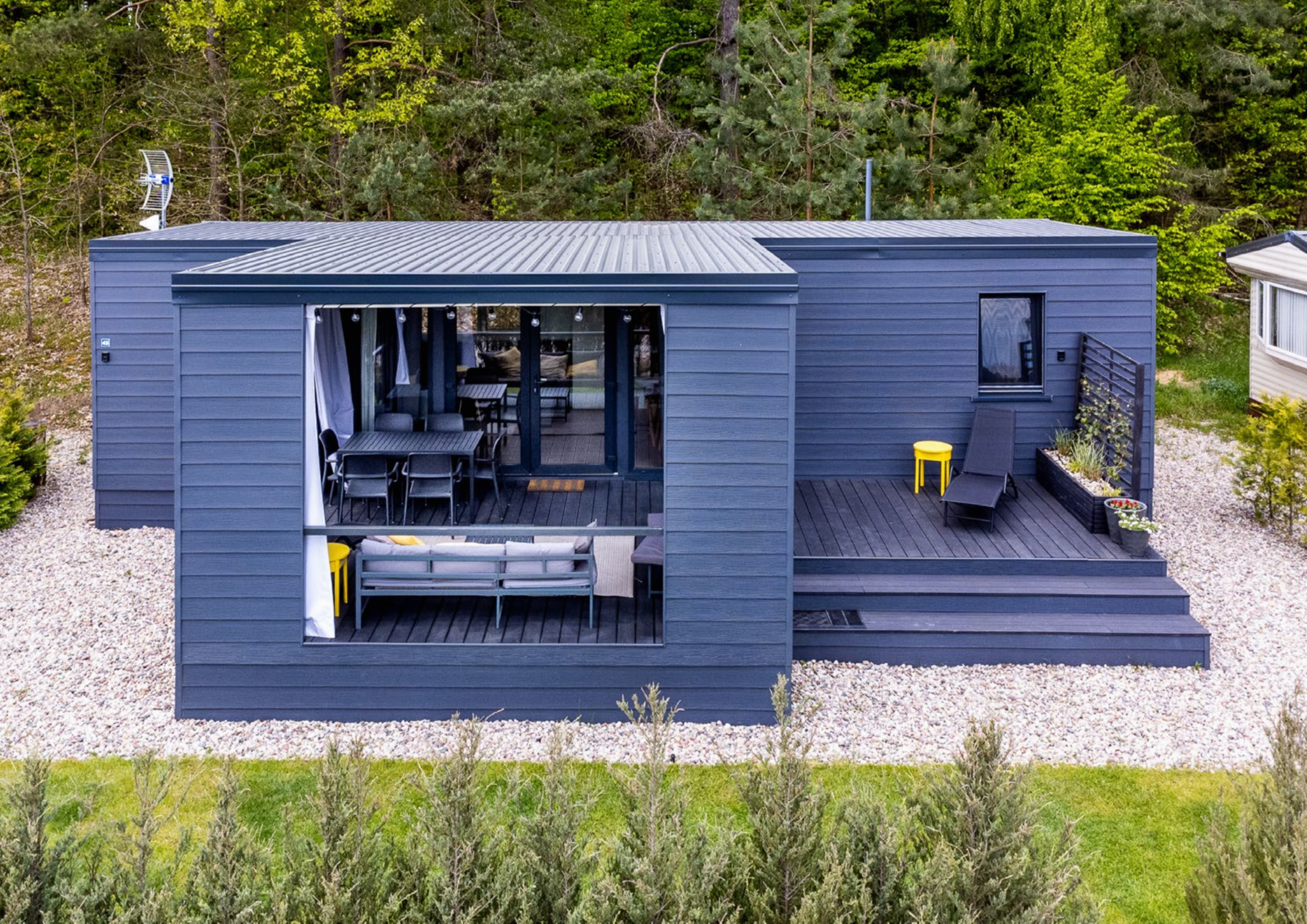
---



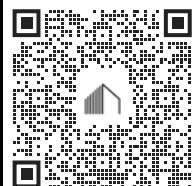




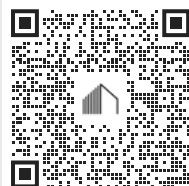
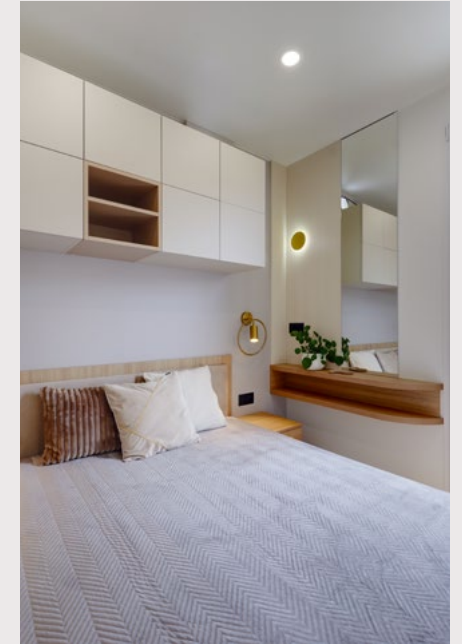




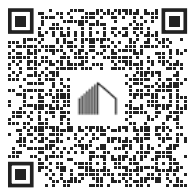
# Sample interior designs



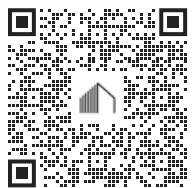
**48 m<sup>2</sup> house  
cream**



**44 m<sup>2</sup> house  
ecru**



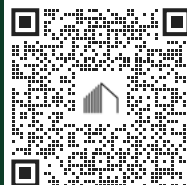
40 m<sup>2</sup> house  
camel



48 m<sup>2</sup> house  
sage



**48 m<sup>2</sup> house coral**



**63 m<sup>2</sup> house gold**



## Terraces

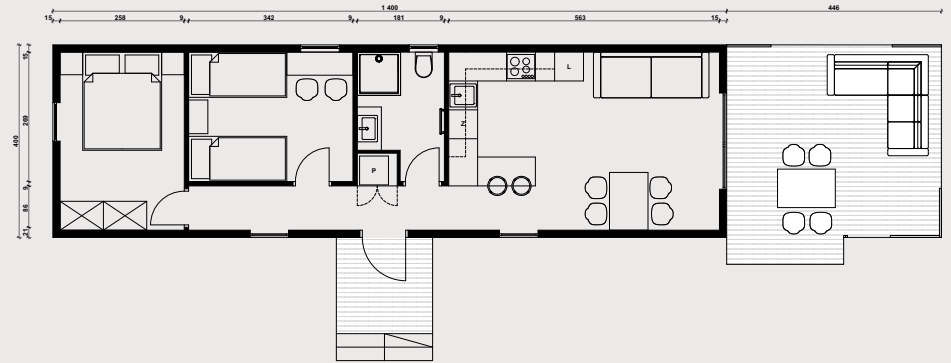
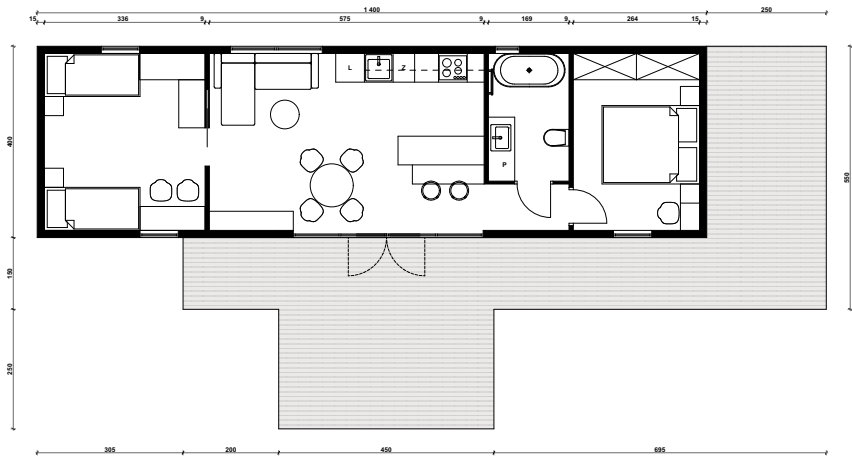
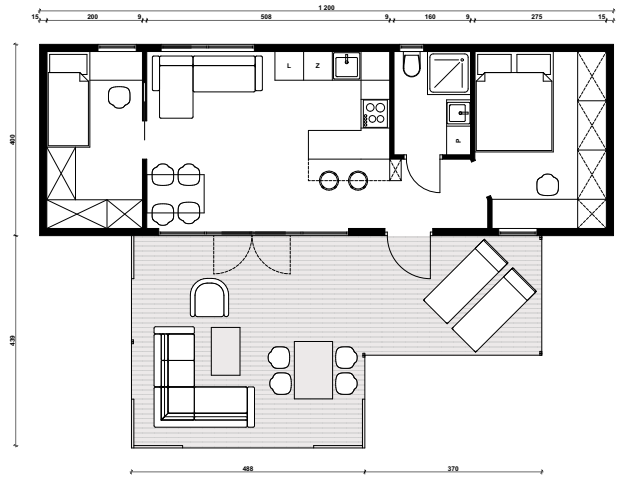
---

**For each mobile module, we can produce a terrace with a gazebo, which constitutes a great place to relax and gives the house a unique character.**

Gazebos - like houses - are built using the timber-frame technology, on a steel structure. The first part consists of a partially covered driveable terrace, and the second a fully covered extension.

We use Kerafront or Vinylit panels on the facade, composite boards on the floor, and sheet metal on the roof. We leave you the choice of the size and shape of the terrace and the finishing elements.

# Examples of terrace configuration



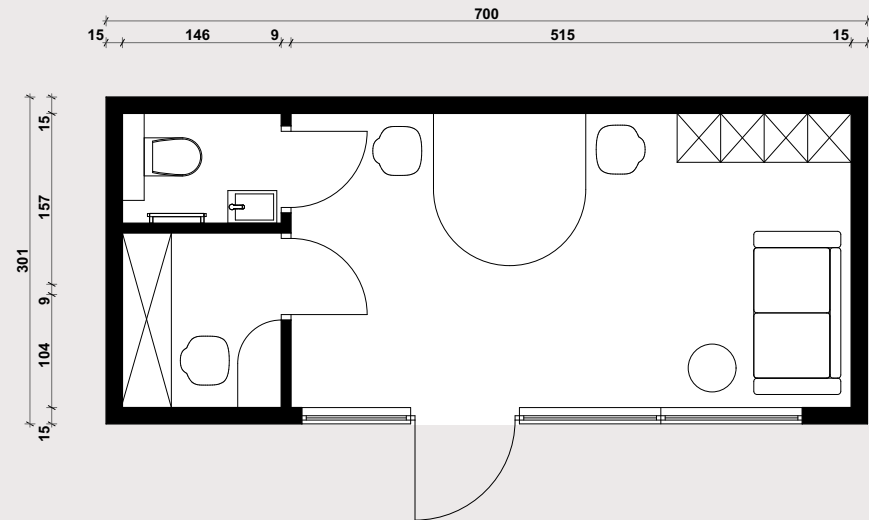
# Business premises and modular homes

**Vero Homes offers mobile offices, facilities for the hotel and tourism industry (campsites, holiday resorts), staff accommodation, sanitary modules, sanitary facilities, as well as other points of business.**

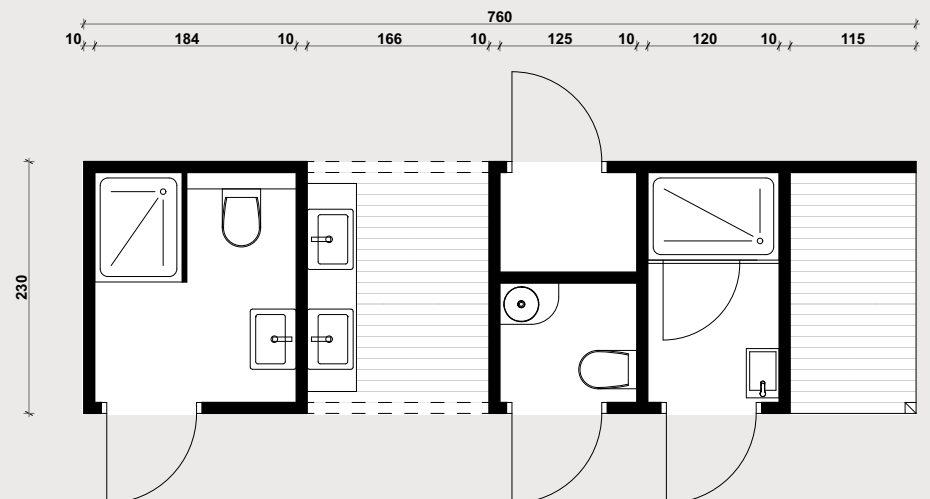
A mobile home is cost-effective, while providing a quick return on investment, and allowing you to optimise your profits. It does not require a building permit and therefore constitutes an option that is chosen more often by entrepreneurs, who are further encouraged by the fact that a mobile home can be financed through leasing.

**We also create modular houses consisting of 2-4 mobile parts joined together on the investor's land.**

Office  
Sample plan



Sanitary  
Sample plan









Office



Sanitary



## Standard furnishing

**We specialise  
in turnkey houses.  
The following items  
are included in the price.**

individual design

underfloor heating with temperature controllers  
in each room

triple-glazed windows

standard or sliding internal doors

custom furniture in every room

fully equipped kitchen with Blum fittings

built-in household appliances (induction hob,  
dishwasher, oven, fridge-freezer, extractor hood)

smart TV

washing machine, shower cabin

upholstered furniture, beds, tables, and chairs

decorations (carpets, bedspreads, cushions, wall lamps)

# Mobile home specification

GENERAL ELEMENTS	
Construction	steel frame with closed and open profiles, protected against corrosion; 2 axles with wheels, removable drawbar for transport
Insulation	moisture, wind, vapour
Thermal insulation	year-round insulation with PUR foam (roof: 20 cm, floor: 30-45 cm, walls: 15 cm)
Mechanical ventilation	in the bathroom and kitchen, as well as venting of the sanitary system
Roof	single-pitch, covered with sheet metal
Windows	triple-glazed with ventilators. Available options:  OPTION 1 a) 800 x 1200 window 3 pcs. b) 500 x 500 window 1 pc. c) 1950 x 750 window 1 pc. d) 4-wing window with key-opening balcony door 1 pc. (2x fix 990 x 2100 + balcony door 1986 x 2100) or 2-wing sliding window (1980 x 2100) + front door 90 cm  OPTION 2 a) windows 600 x 2100 5 pcs. (3x half-fix - top open, 2x fix) b) 2-wing sliding window (2000 x 2100) + front door
Facade finishing	Kerrafront Classic or Vinylit Quattro panels
Interior wall and ceiling finishing	Waterproof MDF board
Floor finishing	panels and skirting boards in all rooms except the bathroom; PVC flooring in the bathroom
Electrical system	aerial socket, distribution box, outdoor socket, socket under the house for heating cable, 20 sockets and switches in the house
Water and sewage system	in the bathroom and in the kitchen
Ventilation and RTV installation	
Heating	underfloor heating (Termofol heating films and mats, wi-fi controller in each room) / electric or gas - max. 5 radiators (one in each room) included in the price
Lighting	internal LED
Internal door	4 units with frames; a choice of traditional or sliding doors

BATHROOM	
Shower cabin 90 x 90 cm	Washing machine - 40 or 60 cm
Free-standing compact toilet	Mirror
Basin with a tap	Bathroom rug
Washstand cabinet - made-to-fit	Bathroom accessories
Water heater - installed in case of underfloor heating	Bathroom hamper
Electric heater - installed in the case of underfloor or electric heating	
LIVING ROOM WITH KITCHENETTE	
Made-to-measure kitchen fitting - 5 running meters included in the price; Aquafront acrylic fronts; Blum fittings, closing: soft-close or tip-on, led lighting between upper and lower cabinet, table top and coffee table*.	
Large sofa - corner sofa with sleeping function	Pillows - 4 pcs; inlays and pillowcases
Table	Sink with a tap
Chairs - 4 units	Fridge-freezer - made-to-fit
TV set - with smart function, up to 42 inches	Oven - made-to-fit
Coffee table	Hob - a choice of: gas, electric, or induction
Table decoration - runner or mats + 4 plates	Dishwasher - 46 or 60 cm, built-in
Frame and poster	Hood
Carpet	
OTHER ROOMS	
Custom-made furniture - 5 running meters included in the price; sliding or traditional opening wardrobes*	Wall lamps - 2 pcs.
160 x 200 cm bed - with lifting frame	Rugs - 2 pcs.
90 x 200 cm bed - 2 pcs.	Carpet
160 x 200 cm mattress	Pillows - 6 pcs; inlays and pillowcases
90 x 200 cm mattress - 2 pcs.	160 x 200 cm bed cover
Sofa - up to a width of 120 cm	90 x 200 cm bed cover - 2 pcs.
Frames and posters - 2 pcs.	

\*in all custom-made furniture, a total of 10 drawers. There is an additional charge for additional drawers and cargo baskets

# Additionally paid options



**Each house can be enhanced with elements at an additional charge.**

House transport	Air-conditioning
Setting and levelling the house	Monitoring
Double-pitch roof	Alarm
Terrace	Bathtub (instead of shower)
Gazebo-forming extension	Fibo panels in the bathroom + double-walled shower cabin
Transport of the terrace and gazebo	Geberit (suspended toilet)
Installation of the terrace and gazebo	Gloss furniture, additional drawers or cargo baskets
Facade panels other than Kerrafront Classic and Vinylit Quattro	Photovoltaics
External roller shutters in the house	Heat pump
External roller shutters in the gazebo	Recuperation
Internal curtains or roller blinds	House bottom/terrace construction
Window mosquito nets in the house	3D visualisation of the house
Sliding mosquito net for front doors	Construction design
Mosquito nets in the gazebo	Other investor requests



# Contact details

---

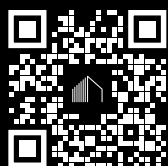
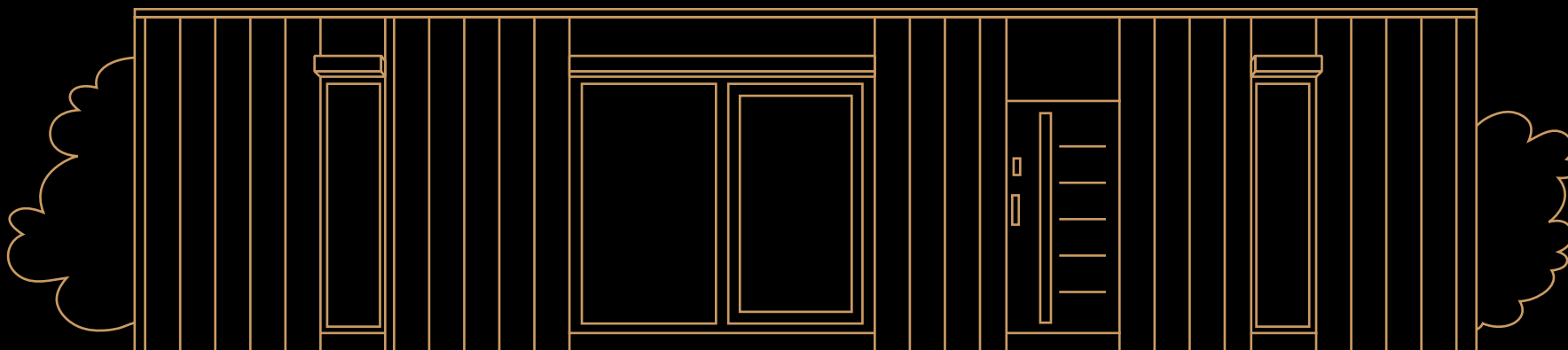


**Let us know what your dream house looks like.  
We will design the space and find the best  
solutions to meet your needs.**

**We invite you to visit our office and showcase  
houses.**

**Vero Homes**  
ul. M. Skłodowskiej-Curie 18  
42-700 Lubliniec  
Poland

phone: +48 519 419 317  
info@verohomes.pl



+48 519 419 317

info@verohomes.pl

www.verohomes.pl/en

facebook.com/verohomes.domymobilne

instagram.com/verohomes.domymobilne

youtube.com/@verohomes